

NOTES:  
 1) FOR OPTIMAL REINFORCEMENT PLACEMENT IN THE NUDURA FORM, SPACING OF HORIZONTAL REINFORCEMENT TO BE SPECIFIED AT 18" (457mm) O.C. AND VERTICAL REINFORCEMENT TO BE SPECIFIED AT MULTIPLES OF 8" (203mm) O.C. REFER TO NUDURA REINFORCEMENT PLACEMENT DETAILS.

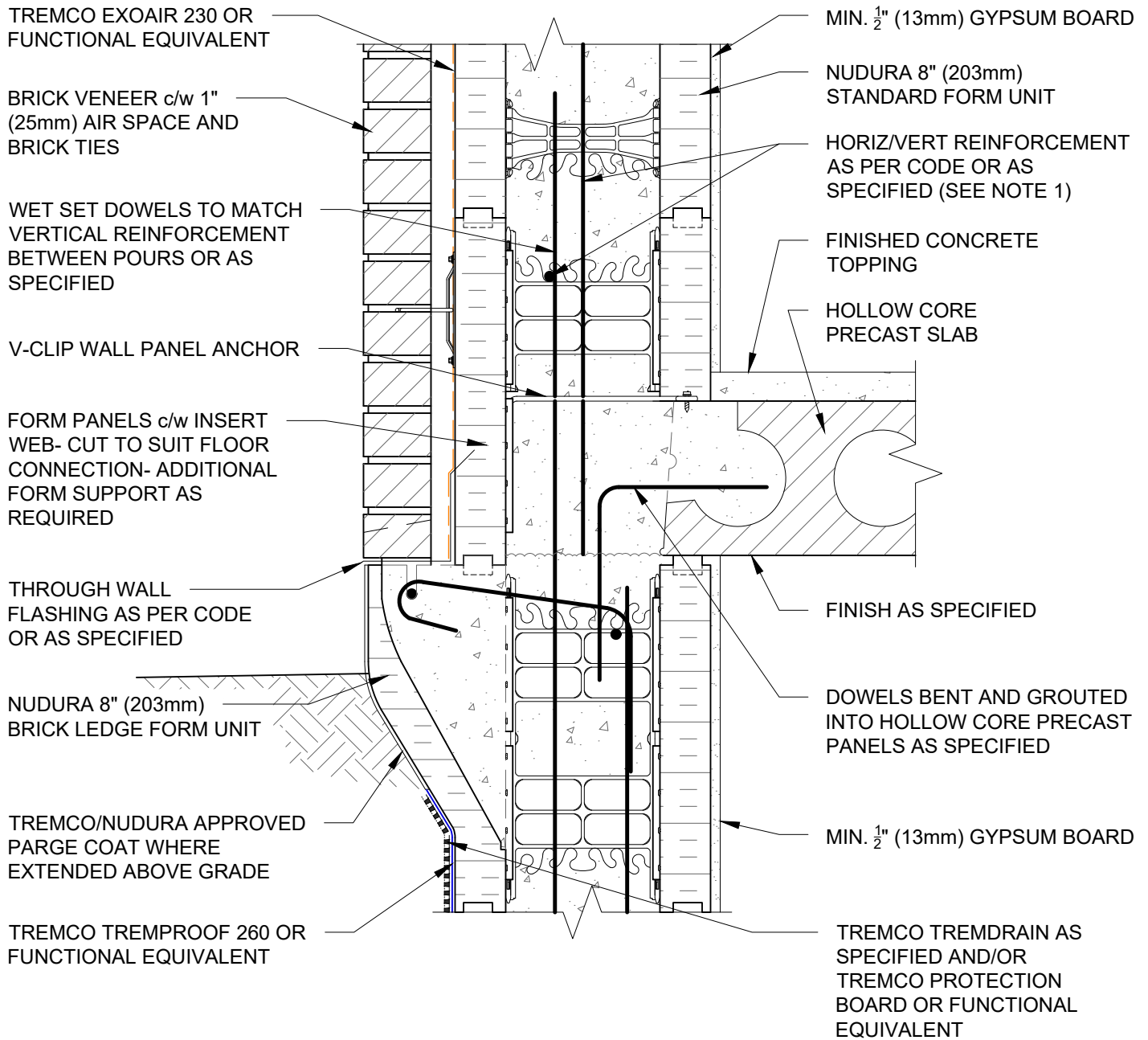
*This detail is for general informational purposes only. The project design professional determines, in its sole discretion, whether this detail or a functionally equivalent detail is best suited for the project with respect to any architecture, engineering, and design requirements, including any local building code requirements. If this document is not reviewed and the product is not approved for use by a licensed design professional, the customer agrees that the detail may contain substantive flaws requiring correction, and hereby releases Tremco CPG Inc. from any and all liability related to the design and installation of the product. This detail is subject to change without notice. Contact Tremco to ensure you have the most recent version.*

**Non-Combustible Construction - Grade at Floor**



Detail: Nudura 8" (203mm) Form Unit, Brick Ledge Form Unit, Hollow Core Precast Slab, Bearing Wall, Brick Veneer Finish			File Name:
Drawn by: TVC	Checked by: KS	Scale: 1:8	D8A05
Revision #: 04	Revised by: KAB	Date: 5/6/2024	
www.tremcocpg.com			





NOTES:  
 1) FOR OPTIMAL REINFORCEMENT PLACEMENT IN THE NUDURA FORM, SPACING OF HORIZONTAL REINFORCEMENT TO BE SPECIFIED AT 18" (457mm) O.C. AND VERTICAL REINFORCEMENT TO BE SPECIFIED AT MULTIPLES OF 8" (203mm) O.C. REFER TO NUDURA REINFORCEMENT PLACEMENT DETAILS.

*This detail is for general informational purposes only. The project design professional determines, in its sole discretion, whether this detail or a functionally equivalent detail is best suited for the project with respect to any architecture, engineering, and design requirements, including any local building code requirements. If this document is not reviewed and the product is not approved for use by a licensed design professional, the customer agrees that the detail may contain substantive flaws requiring correction, and hereby releases Tremco CPG Inc. from any and all liability related to the design and installation of the product. This detail is subject to change without notice. Contact Tremco to ensure you have the most recent version.*

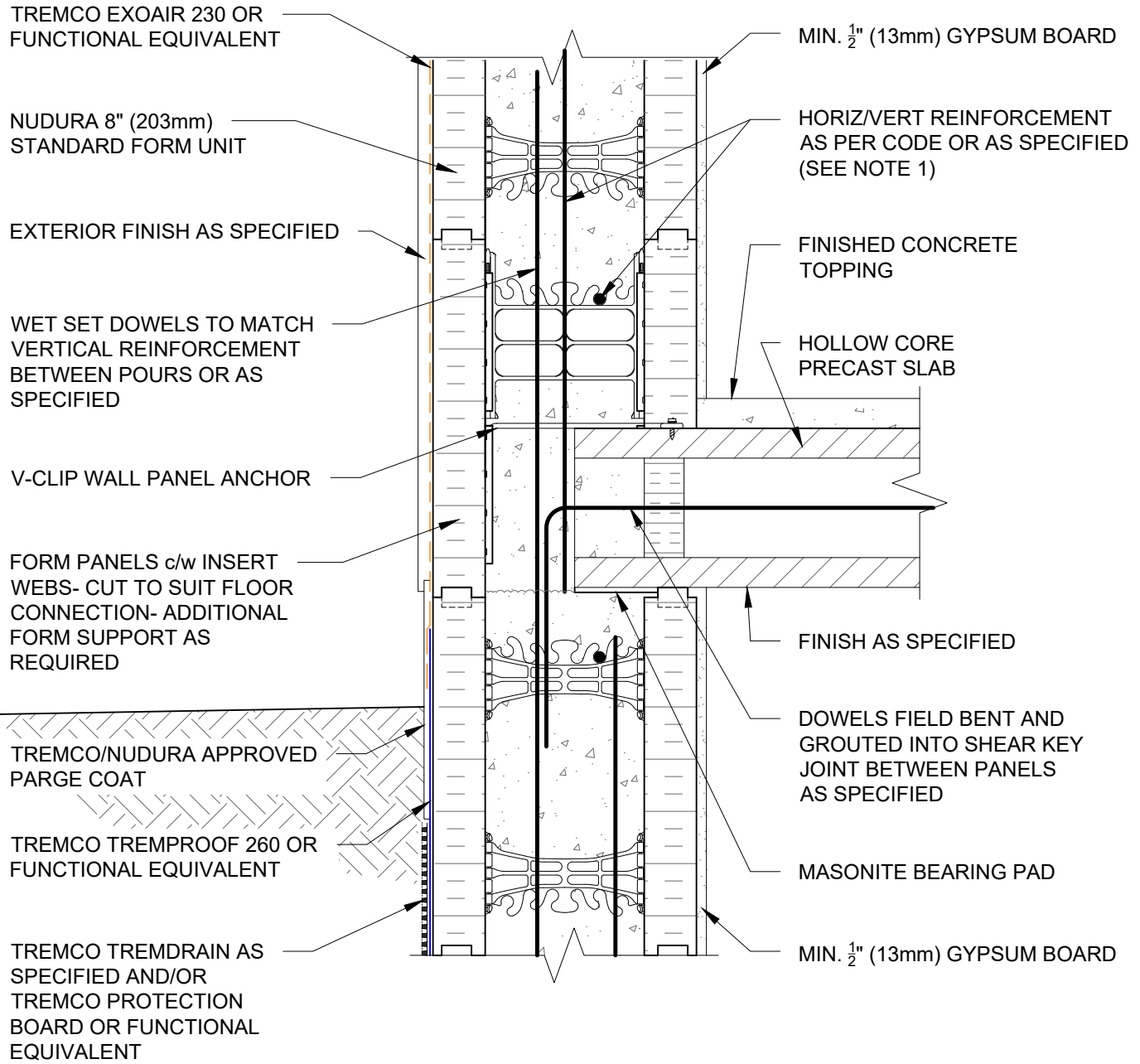
**Non-Combustible Construction - Grade at Floor**



Detail: Nudura 8" (203mm) Form Unit, Brick Ledge Form Unit, Hollow Core Precast Slab, Exterior Side Wall, Brick Veneer Finish		
Drawn by: TVC	Checked by: KS	Scale: 1:8
Revision #: 04	Revised by: KAB	Date: 5/6/2024

File Name:	D8A06
------------	-------





NOTES:  
 1) FOR OPTIMAL REINFORCEMENT PLACEMENT IN THE NUDURA FORM, SPACING OF HORIZONTAL REINFORCEMENT TO BE SPECIFIED AT 18" (457mm) O.C. AND VERTICAL REINFORCEMENT TO BE SPECIFIED AT MULTIPLES OF 8" (203mm) O.C. REFER TO NUDURA REINFORCEMENT PLACEMENT DETAILS.

*This detail is for general informational purposes only. The project design professional determines, in its sole discretion, whether this detail or a functionally equivalent detail is best suited for the project with respect to any architecture, engineering, and design requirements, including any local building code requirements. If this document is not reviewed and the product is not approved for use by a licensed design professional, the customer agrees that the detail may contain substantive flaws requiring correction, and hereby releases Tremco CPG Inc. from any and all liability related to the design and installation of the product. This detail is subject to change without notice. Contact Tremco to ensure you have the most recent version.*

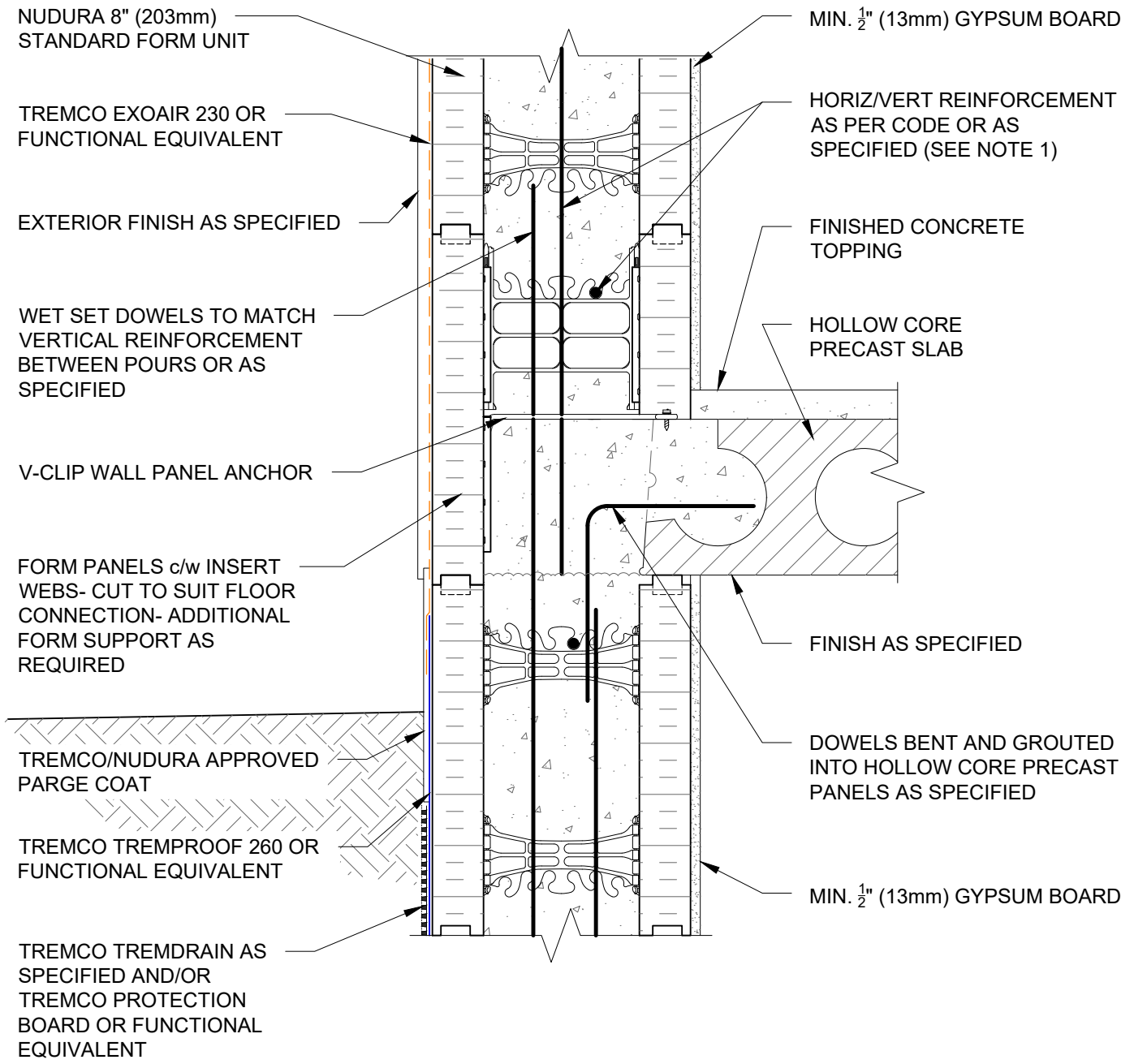
**Non-Combustible Construction - Grade at Floor**



Detail: Nudura 8" (203mm) Form Unit, Hollow Core Precast Slab, Exterior Bearing Wall, Exterior Finish as Specified		
Drawn by: TVC	Checked by: KS	Scale: 1:8
Revision #: 04	Revised by: KAB	Date: 5/6/2024

File Name:
D8A10





NOTES:  
 1) FOR OPTIMAL REINFORCEMENT PLACEMENT IN THE NUDURA FORM, SPACING OF HORIZONTAL REINFORCEMENT TO BE SPECIFIED AT 18" (457mm) O.C. AND VERTICAL REINFORCEMENT TO BE SPECIFIED AT MULTIPLES OF 8" (203mm) O.C. REFER TO NUDURA REINFORCEMENT PLACEMENT DETAILS.

*This detail is for general informational purposes only. The project design professional determines, in its sole discretion, whether this detail or a functionally equivalent detail is best suited for the project with respect to any architecture, engineering, and design requirements, including any local building code requirements. If this document is not reviewed and the product is not approved for use by a licensed design professional, the customer agrees that the detail may contain substantive flaws requiring correction, and hereby releases Tremco CPG Inc. from any and all liability related to the design and installation of the product. This detail is subject to change without notice. Contact Tremco to ensure you have the most recent version.*

**Non-Combustible Construction - Grade at Floor**



Detail: Nudura 8" (203mm) Form Unit, Hollow Core Precast Slab, Exterior Side Wall, Exterior Finish as Specified		
Drawn by: TVC	Checked by: KS	Scale: 1:8
Revision #: 04	Revised by: KAB	Date: 5/6/2024

File Name:
D8A11



NUDURA 8" (203mm)  
STANDARD FORM UNIT

TREMCO EXOAIR 230 OR  
FUNCTIONAL EQUIVALENT

EXTERIOR FINISH AS SPECIFIED

WET SET DOWELS TO  
MATCH VERTICAL  
REINFORCEMENT  
BETWEEN POURS OR  
AS SPECIFIED

HORIZ/VERT REINFORCEMENT  
AS PER CODE OR AS  
SPECIFIED (SEE NOTE 1)

TREMCO/NUDURA APPROVED  
PARGE COAT

TREMCO TREMPROOF 260 OR  
FUNCTIONAL EQUIVALENT

TREMCO TREMDRAIN AS  
SPECIFIED AND/OR  
TREMCO PROTECTION  
BOARD OR FUNCTIONAL  
EQUIVALENT

MIN. 1/2" (13mm) GYPSUM BOARD

FORM PANELS c/w INSERT  
WEBS- CUT TO SUIT FLOOR  
CONNECTION- ADDITIONAL  
FORM SUPPORT AS REQUIRED

ALLOW FLOOR SLAB TO REST ON  
TO BEARING WALL CONCRETE

EPS FOAM REMOVED AT JOIST  
LOCATIONS ONLY TO ALLOW  
JOIST PLACEMENT

PROPRIETARY STEEL  
JOIST FLOOR SYSTEM

CEILING FINISH AS PER STEEL JOIST  
MANUFACTURERS SPECIFICATION  
(SEE NOTE 2)

MIN. 1/2" (13mm) GYPSUM BOARD

NOTES:

1) FOR OPTIMAL REINFORCEMENT PLACEMENT IN THE NUDURA FORM, SPACING OF HORIZONTAL REINFORCEMENT TO BE SPECIFIED AT 18" (457mm) O.C. AND VERTICAL REINFORCEMENT TO BE SPECIFIED AT MULTIPLES OF 8" (203mm) O.C. REFER TO NUDURA REINFORCEMENT PLACEMENT DETAILS.

2) WHERE GYPSUM BOARD IS REQUIRED TO COMPLETE FIRE RATED ASSEMBLY, EPS FOAM KERF CUT TO ENABLE CEILING FINISH TO PROVIDE THERMAL BARRIER CONTACT TO CONCRETE.

*This detail is for general informational purposes only. The project design professional determines, in its sole discretion, whether this detail or a functionally equivalent detail is best suited for the project with respect to any architecture, engineering, and design requirements, including any local building code requirements. If this document is not reviewed and the product is not approved for use by a licensed design professional, the customer agrees that the detail may contain substantive flaws requiring correction, and hereby releases Tremco CPG Inc. from any and all liability related to the design and installation of the product. This detail is subject to change without notice. Contact Tremco to ensure you have the most recent version.*

**Non-Combustible Construction - Grade at Floor**

Detail: Nudura 8" (203mm) Form Unit, Steel Joist Floor System, Exterior Wall,  
Exterior Finish as Specified

File Name:

Drawn by: TVC

Checked by: KS

Scale: 1:8

D8B01

Revision #: 04

Revised by: KAB

Date: 5/6/2024

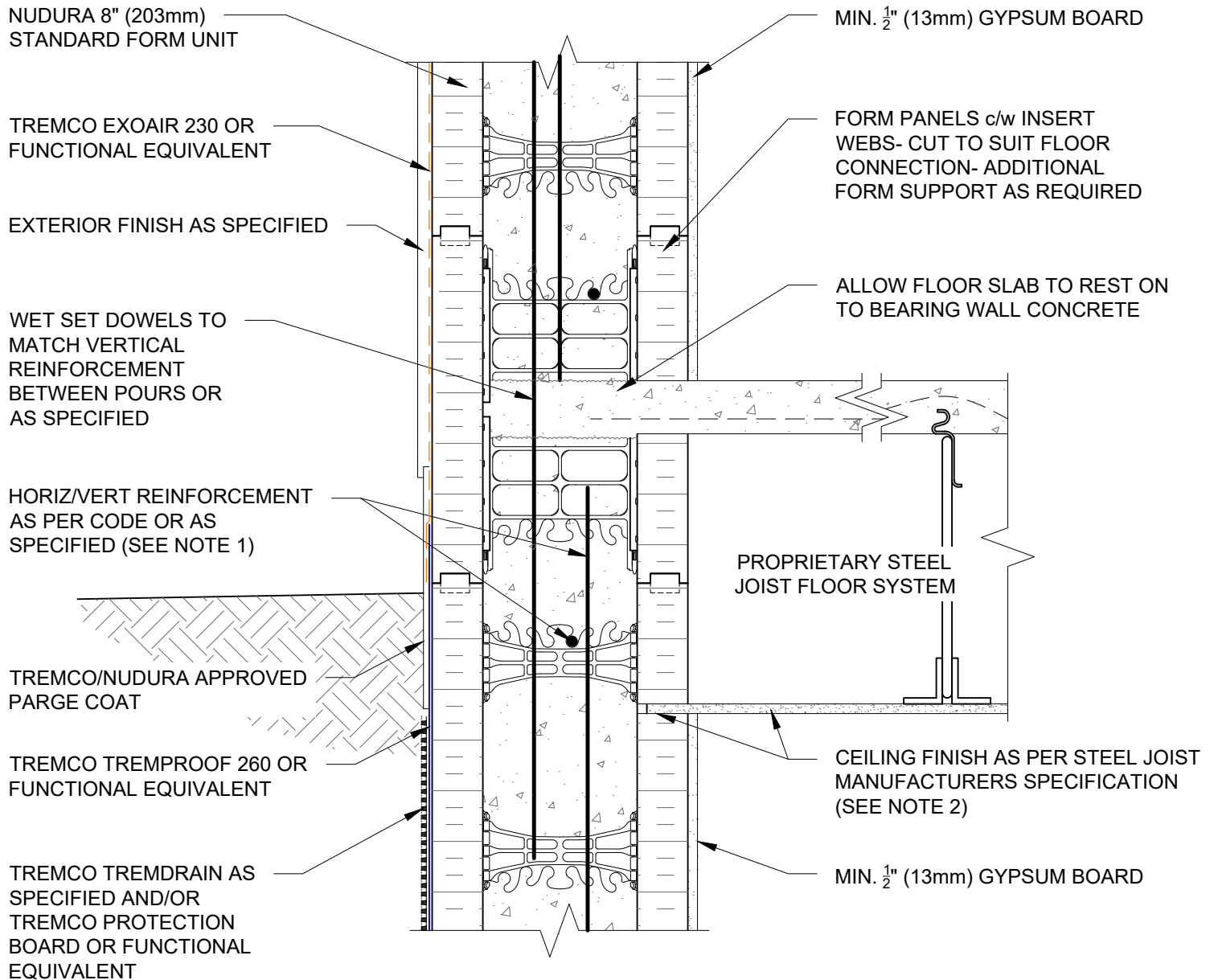


Nudura Technical Support: 866-468-6299  
International: +1 705-726-9499

www.tremcocpg.com



Construction Products Group



- NOTES:
- 1) FOR OPTIMAL REINFORCEMENT PLACEMENT IN THE NUDURA FORM, SPACING OF HORIZONTAL REINFORCEMENT TO BE SPECIFIED AT 18" (457mm) O.C. AND VERTICAL REINFORCEMENT TO BE SPECIFIED AT MULTIPLES OF 8" (203mm) O.C. REFER TO NUDURA REINFORCEMENT PLACEMENT DETAILS.
  - 2) WHERE GYPSUM BOARD IS REQUIRED TO COMPLETE FIRE RATED ASSEMBLY, EPS FOAM KERF CUT TO ENABLE CEILING FINISH TO PROVIDE THERMAL BARRIER CONTACT TO CONCRETE.

*This detail is for general informational purposes only. The project design professional determines, in its sole discretion, whether this detail or a functionally equivalent detail is best suited for the project with respect to any architecture, engineering, and design requirements, including any local building code requirements. If this document is not reviewed and the product is not approved for use by a licensed design professional, the customer agrees that the detail may contain substantive flaws requiring correction, and hereby releases Tremco CPG Inc. from any and all liability related to the design and installation of the product. This detail is subject to change without notice. Contact Tremco to ensure you have the most recent version.*

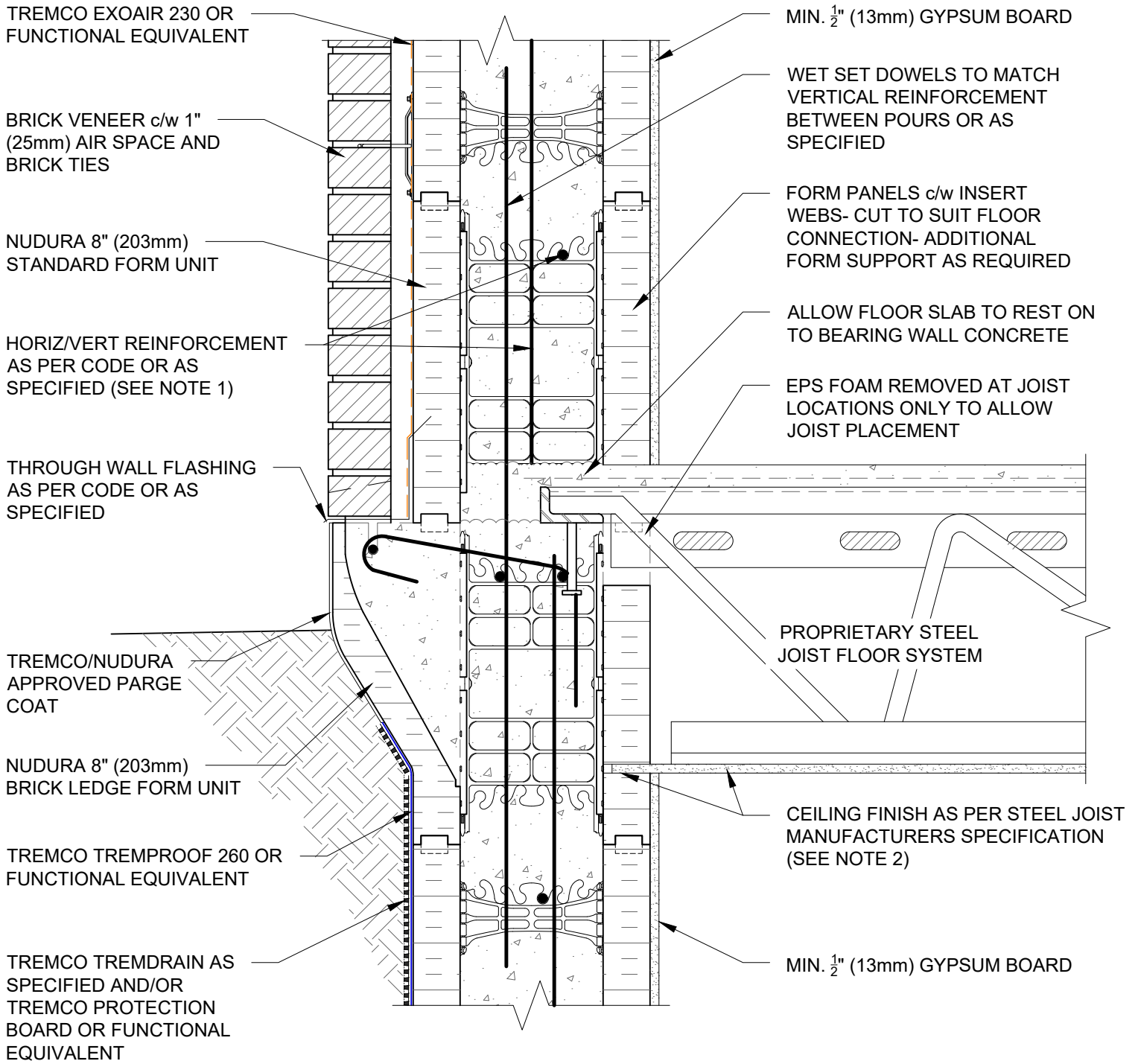
**Non-Combustible Construction - Grade at Floor**



Detail: Nudura 8" (203mm) Form Unit, Steel Joist Floor System, Exterior Side Wall, Exterior Finish as Specified		
Drawn by: TVC	Checked by: KS	Scale: 1:8
Revision #: 04	Revised by: KAB	Date: 5/6/2024

File Name:
D8B02





- NOTES:
- 1) FOR OPTIMAL REINFORCEMENT PLACEMENT IN THE NUDURA FORM, SPACING OF HORIZONTAL REINFORCEMENT TO BE SPECIFIED AT 18" (457mm) O.C. AND VERTICAL REINFORCEMENT TO BE SPECIFIED AT MULTIPLES OF 8" (203mm) O.C. REFER TO NUDURA REINFORCEMENT PLACEMENT DETAILS.
  - 2) WHERE GYPSUM BOARD IS REQUIRED TO COMPLETE FIRE RATED ASSEMBLY, EPS FOAM KERF CUT TO ENABLE CEILING FINISH TO PROVIDE THERMAL BARRIER CONTACT TO CONCRETE.

*This detail is for general informational purposes only. The project design professional determines, in its sole discretion, whether this detail or a functionally equivalent detail is best suited for the project with respect to any architecture, engineering, and design requirements, including any local building code requirements. If this document is not reviewed and the product is not approved for use by a licensed design professional, the customer agrees that the detail may contain substantive flaws requiring correction, and hereby releases Tremco CPG Inc. from any and all liability related to the design and installation of the product. This detail is subject to change without notice. Contact Tremco to ensure you have the most recent version.*

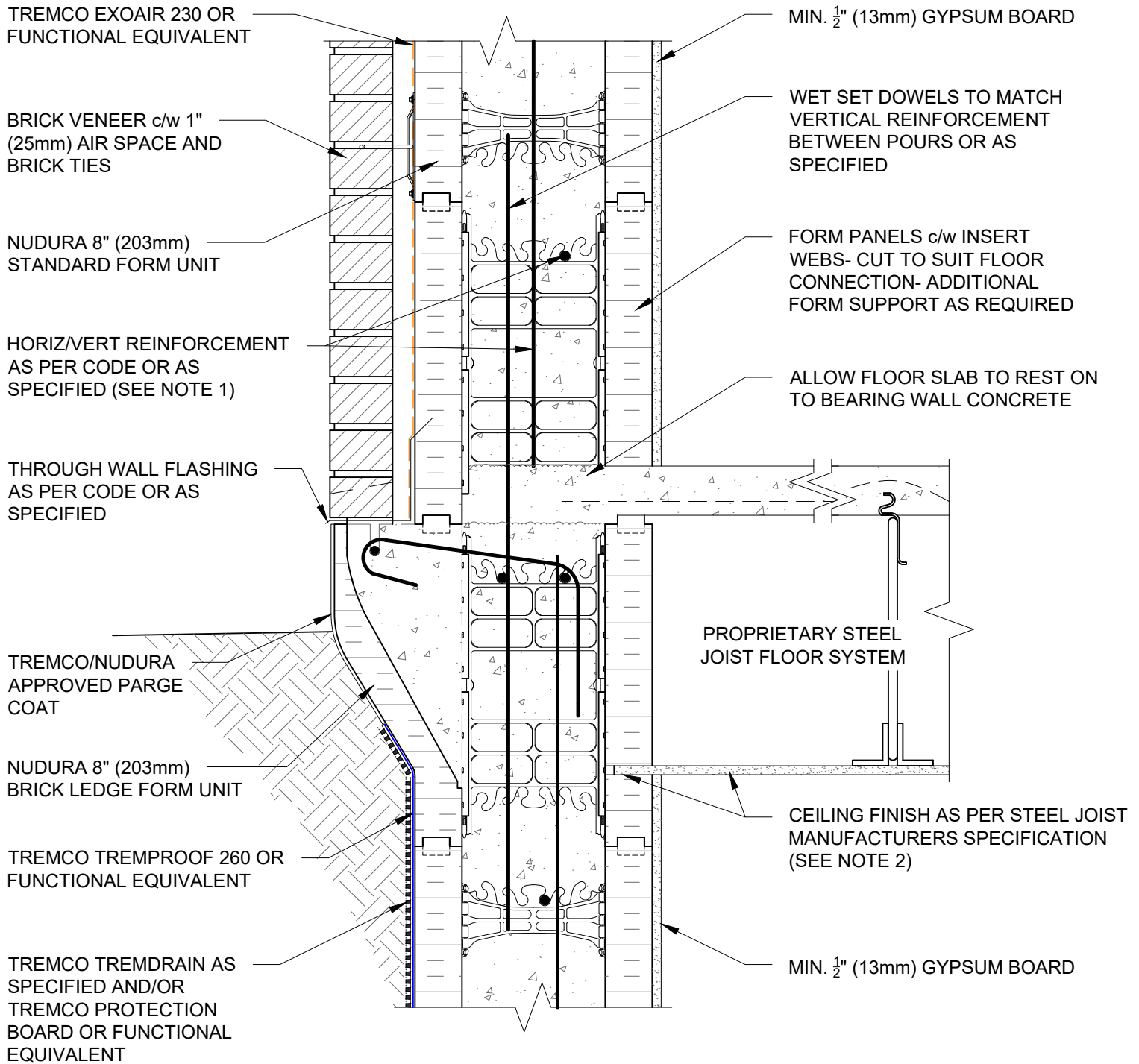
**Non-Combustible Construction - Grade at Floor**



Detail: Nudura 8" (203mm) Brick Ledge Form Unit at Grade, Steel Joists Floor System, Exterior Bearing Wall, Brick Veneer Finish			File Name:
Drawn by: TVC	Checked by: KS	Scale: 1:8	D8B05
Revision #: 04	Revised by: KAB	Date: 5/6/2024	

www.tremcocpg.com





- NOTES:
- 1) FOR OPTIMAL REINFORCEMENT PLACEMENT IN THE NUDURA FORM, SPACING OF HORIZONTAL REINFORCEMENT TO BE SPECIFIED AT 18" (457mm) O.C. AND VERTICAL REINFORCEMENT TO BE SPECIFIED AT MULTIPLES OF 8" (203mm) O.C. REFER TO NUDURA REINFORCEMENT PLACEMENT DETAILS.
  - 2) WHERE GYPSUM BOARD IS REQUIRED TO COMPLETE FIRE RATED ASSEMBLY, EPS FOAM KERF CUT TO ENABLE CEILING FINISH TO PROVIDE THERMAL BARRIER CONTACT TO CONCRETE.

*This detail is for general informational purposes only. The project design professional determines, in its sole discretion, whether this detail or a functionally equivalent detail is best suited for the project with respect to any architecture, engineering, and design requirements, including any local building code requirements. If this document is not reviewed and the product is not approved for use by a licensed design professional, the customer agrees that the detail may contain substantive flaws requiring correction, and hereby releases Tremco CPG Inc. from any and all liability related to the design and installation of the product. This detail is subject to change without notice. Contact Tremco to ensure you have the most recent version.*

**Non-Combustible Construction - Grade at Floor**



Detail: Nudura 8" (203mm) Brick Ledge Form Unit at Grade, Steel Joists Floor System, Exterior Side Wall, Brick Veneer Finish			File Name:
Drawn by: TVC	Checked by: KS	Scale: 1:8	D8B06
Revision #: 04	Revised by: KAB	Date: 5/6/2024	

www.tremcocpg.com





FORM PANELS c/w INSERT  
WEBS- CUT TO SUIT FLOOR  
CONNECTION- ADDITIONAL  
FORM SUPPORT AS  
REQUIRED

TREMCO EXOAIR 230 OR  
FUNCTIONAL EQUIVALENT

EXTERIOR FINISH  
AS SPECIFIED

WET SET DOWELS FIELD  
BENT INTO SLAB AS  
SPECIFIED

U BRACKET ANCHOR INSERT

TREMCO/NUDURA APPROVED  
PARGE COAT

HORIZ/VERT REINFORCEMENT  
AS PER CODE OR AS SPECIFIED

TREMCO TREMPROOF 260 OR  
FUNCTIONAL EQUIVALENT

TREMCO TREMDRAIN AS  
SPECIFIED AND/OR  
TREMCO PROTECTION  
BOARD OR FUNCTIONAL  
EQUIVALENT

MIN. 1/2" (13mm) GYPSUM BOARD

GYPSUM BOARD FINISHED/FIRE  
STOP INSTALLED AT JOISTS AS  
PER CODE

COMPOSITE STEEL DECK-SLAB  
AND REINFORCEMENT AS  
SPECIFIED

OWSJ

INTERIOR INSULATION  
REMOVED AT JOIST  
LOCATIONS

WET SET DOWELS TO MATCH  
VERTICAL REINFORCEMENT  
BETWEEN POURS OR AS  
SPECIFIED

NUDURA 8" (203mm)  
STANDARD FORM UNIT

NOTES:  
1) FOR OPTIMAL REINFORCEMENT PLACEMENT IN THE NUDURA FORM,  
SPACING OF HORIZONTAL REINFORCEMENT TO BE SPECIFIED AT 18"  
(457mm) O.C. AND VERTICAL REINFORCEMENT TO BE SPECIFIED AT  
MULTIPLES OF 8" (203mm) O.C. REFER TO NUDURA REINFORCEMENT  
PLACEMENT DETAILS.

*This detail is for general informational purposes only. The project design professional determines, in its sole discretion, whether this detail or a functionally equivalent detail is best suited for the project with respect to any architecture, engineering, and design requirements, including any local building code requirements. If this document is not reviewed and the product is not approved for use by a licensed design professional, the customer agrees that the detail may contain substantive flaws requiring correction, and hereby releases Tremco CPG Inc. from any and all liability related to the design and installation of the product. This detail is subject to change without notice. Contact Tremco to ensure you have the most recent version.*

**Non-Combustible Construction - Grade at Floor**



Detail: Nudura 8" (203mm) Form Unit, Composite Steel Deck-Slab, Steel Joist on  
Ext. Bearing Wall, Exterior Finish as Specified

Drawn by: JN

Checked by: KS

Scale: 1:8

Revision #: 05

Revised by: KAB

Date: 5/6/2024

File Name:

D8C03



TREMCO EXOAIR 230 OR  
FUNCTIONAL EQUIVALENT

EXTERIOR FINISH  
AS SPECIFIED

HORIZ/VERT REINFORCEMENT  
AS PER CODE OR AS SPECIFIED  
(SEE NOTE 1)

FORM PANELS c/w INSERT  
WEBS- CUT TO SUIT FLOOR  
CONNECTION- ADDITIONAL  
FORM SUPPORT AS REQUIRED

WET SET DOWELS TO  
MATCH VERTICAL  
REINFORCEMENT BETWEEN  
POURS OR AS SPECIFIED

WET SET FIELD DOWELS  
FIELD BENT INTO SLAB AS  
SPECIFIED

TREMCO/NUDURA APPROVED  
PARGE COAT

TREMCO TREMPROOF 260 OR  
FUNCTIONAL EQUIVALENT

TREMCO TREMDRAIN AS  
SPECIFIED AND/OR  
TREMCO PROTECTION  
BOARD OR FUNCTIONAL  
EQUIVALENT

NUDURA 8" (203mm)  
STANDARD FORM UNIT

MIN. 1/2" (13mm) GYPSUM BOARD

STEEL DECK SUPPORT  
WELDING ANCHOR INSERT

COMPOSITE STEEL DECK- SLAB  
AND REINFORCEMENT AS  
SPECIFIED

INTERIOR INSULATION TO BE  
DISCONTINUOUS AT FLOOR LINES

OWSJ

MINIMUM 1/32" (0.8mm) x 2 1/2" (63.5mm)  
GALVANIZED STEEL CHANNEL CAP  
TO PROVIDE THERMAL BARRIER  
PROTECTION

NOTES:

1) FOR OPTIMAL REINFORCEMENT PLACEMENT IN THE NUDURA FORM,  
SPACING OF HORIZONTAL REINFORCEMENT TO BE SPECIFIED AT 18"  
(457mm) O.C. AND VERTICAL REINFORCEMENT TO BE SPECIFIED AT  
MULTIPLES OF 8" (203mm) O.C. REFER TO NUDURA REINFORCEMENT  
PLACEMENT DETAILS.

*This detail is for general informational purposes only. The project design professional determines, in its sole discretion, whether this detail or a functionally equivalent detail is best suited for the project with respect to any architecture, engineering, and design requirements, including any local building code requirements. If this document is not reviewed and the product is not approved for use by a licensed design professional, the customer agrees that the detail may contain substantive flaws requiring correction, and hereby releases Tremco CPG Inc. from any and all liability related to the design and installation of the product. This detail is subject to change without notice. Contact Tremco to ensure you have the most recent version.*

**Non-Combustible Construction - Grade at Floor**



Detail: Nudura 8" (203mm) Form Unit, Composite Steel Deck-Slab, Steel Joist on  
Side Wall, Exterior Finish as Specified

Drawn by: TVC

Checked by: KS

Scale: 1:8

Revision #: 05

Revised by: KAB

Date: 5/6/2024

File Name:

D8C04



FORM PANELS c/w INSERT WEBS- CUT TO SUIT FLOOR CONNECTION- ADDITIONAL FORM SUPPORT AS REQUIRED

TREMCO EXOAIR 230 OR FUNCTIONAL EQUIVALENT

BRICK VENEER c/w 1" (25mm) AIR SPACE AND BRICK TIES

WET SET DOWELS FIELD BENT INTO SLAB AS SPECIFIED

U BRACKET ANCHOR INSERT

THROUGH WALL FLASHING AS PER CODE OR AS SPECIFIED

TREMCO/NUDURA APPROVED PARGE COAT

NUDURA 8" (203mm) BRICK LEDGE FORM UNIT

TREMCO TREMPROOF 260 OR FUNCTIONAL EQUIVALENT

TREMCO TREMDRAIN AS SPECIFIED AND/OR TREMCO PROTECTION BOARD OR FUNCTIONAL EQUIVALENT

HORIZ/VERT REINFORCEMENT AS PER CODE OR AS SPECIFIED

GYPSUM BOARD FINISHED/FIRE STOP INSTALLED AT JOISTS AS PER CODE

COMPOSITE STEEL DECK-SLAB AND REINFORCEMENT AS SPECIFIED

OWSJ

INTERIOR INSULATION REMOVED AT JOIST LOCATIONS

WET SET DOWELS TO MATCH VERTICAL REINFORCEMENT BETWEEN POURS OR AS SPECIFIED

MIN.  $\frac{1}{2}$ " (13mm) GYPSUM BOARD

NUDURA 8" (203mm) STANDARD FORM UNIT

**NOTES:**

1) FOR OPTIMAL REINFORCEMENT PLACEMENT IN THE NUDURA FORM, SPACING OF HORIZONTAL REINFORCEMENT TO BE SPECIFIED AT 18" (457mm) O.C. AND VERTICAL REINFORCEMENT TO BE SPECIFIED AT MULTIPLES OF 8" (203mm) O.C. REFER TO NUDURA REINFORCEMENT PLACEMENT DETAILS.

*This detail is for general informational purposes only. The project design professional determines, in its sole discretion, whether this detail or a functionally equivalent detail is best suited for the project with respect to any architecture, engineering, and design requirements, including any local building code requirements. If this document is not reviewed and the product is not approved for use by a licensed design professional, the customer agrees that the detail may contain substantive flaws requiring correction, and hereby releases Tremco CPG Inc. from any and all liability related to the design and installation of the product. This detail is subject to change without notice. Contact Tremco to ensure you have the most recent version.*

**Non-Combustible Construction - Grade at Floor**



Nudura Technical Support: 866-468-6299  
International: +1 705-726-9499

Detail: Nudura 8" (203mm) Form Unit, Composite Steel Deck-Slab, Steel Joists on Ext. Bearing Wall, Brick Veneer Finish

Drawn by: TVC

Checked by: KS

Scale: 1:8

Revision #: 05

Revised by: KAB

Date: 5/6/2024

File Name:

D8C06



Construction Products Group

www.tremcocpg.com

TREMCO EXOAIR 230 OR FUNCTIONAL EQUIVALENT

BRICK VENEER c/w 1" (25mm) AIR SPACE AND BRICK TIES

FORM PANELS c/w INSERT WEBS- CUT TO SUIT FLOOR CONNECTION- ADDITIONAL FORM SUPPORT AS REQUIRED

WET SET FIELD DOWELS FIELD BENT INTO SLAB AS SPECIFIED

THROUGH WALL FLASHING AS PER CODE OR AS SPECIFIED

TREMCO/NUDURA APPROVED PARGE COAT

NUDURA 8" (203mm) BRICK LEDGE FORM UNIT

TREMCO TREMPROOF 260 OR FUNCTIONAL EQUIVALENT

TREMCO TREMDRAIN AS SPECIFIED AND/OR TREMCO PROTECTION BOARD OR FUNCTIONAL EQUIVALENT

HORIZ/VERT REINFORCEMENT AS PER CODE OR AS SPECIFIED

NUDURA 8" (203mm) STANDARD FORM UNIT

MIN. 1/2" (13mm) GYPSUM BOARD

STEEL DECK SUPPORT WELDING ANCHOR INSERT

COMPOSITE STEEL DECK-SLAB AND REINFORCEMENT AS SPECIFIED

INTERIOR INSULATION TO BE DISCONTINUOUS AT FLOOR LINES

OWSJ

MINIMUM 1/32" (0.8mm) x 2 1/2" (63.5mm) GALVANIZED STEEL CHANNEL CAP TO PROVIDE THERMAL BARRIER PROTECTION

WET SET DOWELS TO MATCH VERTICAL REINFORCEMENT BETWEEN POURS OR AS SPECIFIED

MIN. 1/2" (13mm) GYPSUM BOARD

NOTES:  
1) FOR OPTIMAL REINFORCEMENT PLACEMENT IN THE NUDURA FORM, SPACING OF HORIZONTAL REINFORCEMENT TO BE SPECIFIED AT 18" (457mm) O.C. AND VERTICAL REINFORCEMENT TO BE SPECIFIED AT MULTIPLES OF 8" (203mm) O.C. REFER TO NUDURA REINFORCEMENT PLACEMENT DETAILS.

*This detail is for general informational purposes only. The project design professional determines, in its sole discretion, whether this detail or a functionally equivalent detail is best suited for the project with respect to any architecture, engineering, and design requirements, including any local building code requirements. If this document is not reviewed and the product is not approved for use by a licensed design professional, the customer agrees that the detail may contain substantive flaws requiring correction, and hereby releases Tremco CPG Inc. from any and all liability related to the design and installation of the product. This detail is subject to change without notice. Contact Tremco to ensure you have the most recent version.*

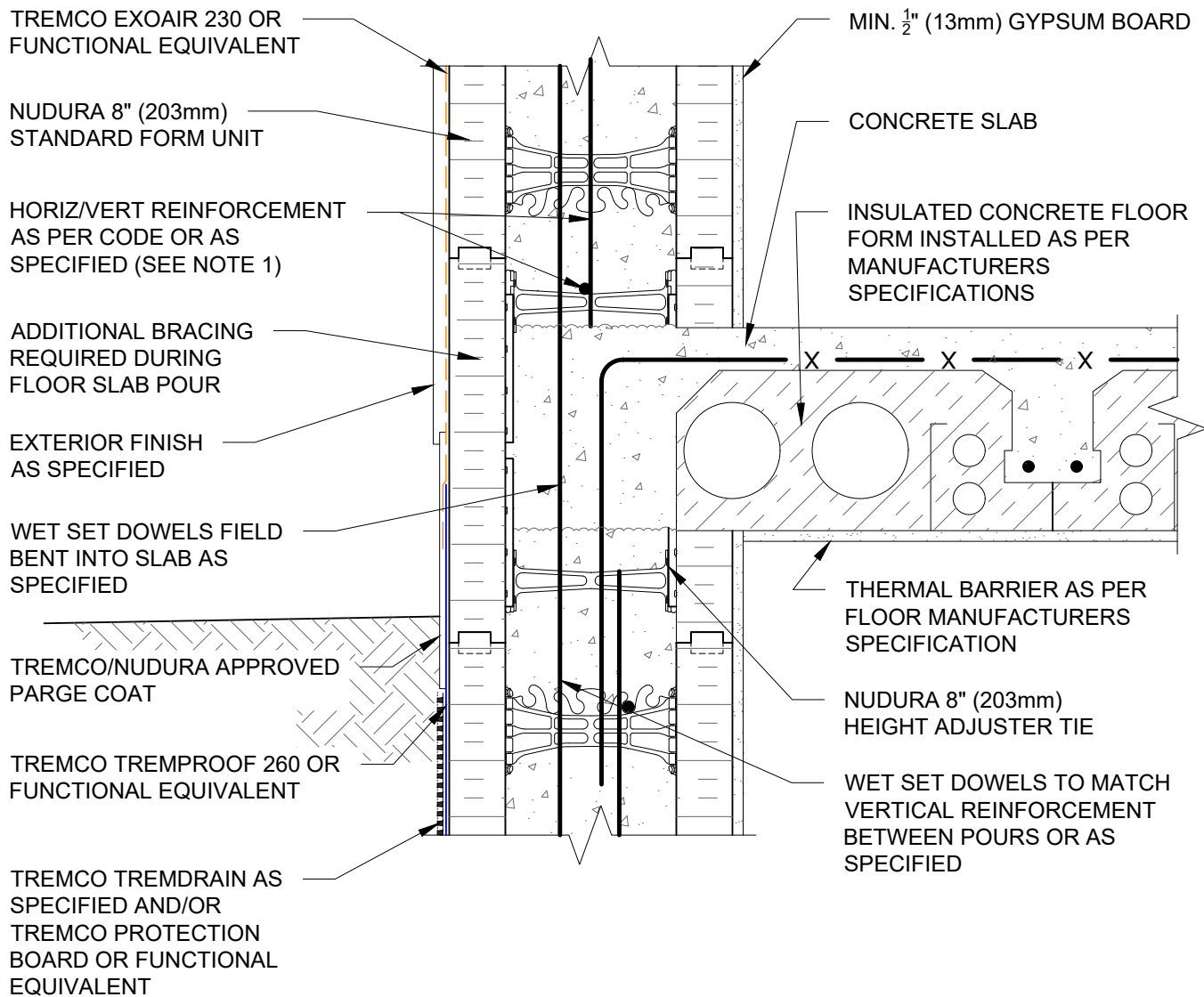
**Non-Combustible Construction - Grade at Floor**



Detail: Nudura 8" (203mm) Form Unit, Composite Steel Deck-Slab, Steel Joists on Side Wall, Brick Veneer Finish		
Drawn by: TVC	Checked by: KS	Scale: 1:8
Revision #: 05	Revised by: KAB	Date: 5/6/2024

File Name:  
D8C07





NOTES:  
 1) FOR OPTIMAL REINFORCEMENT PLACEMENT IN THE NUDURA FORM, SPACING OF HORIZONTAL REINFORCEMENT TO BE SPECIFIED AT 18" (457mm) O.C. AND VERTICAL REINFORCEMENT TO BE SPECIFIED AT MULTIPLES OF 8" (203mm) O.C. REFER TO NUDURA REINFORCEMENT PLACEMENT DETAILS.

*This detail is for general informational purposes only. The project design professional determines, in its sole discretion, whether this detail or a functionally equivalent detail is best suited for the project with respect to any architecture, engineering, and design requirements, including any local building code requirements. If this document is not reviewed and the product is not approved for use by a licensed design professional, the customer agrees that the detail may contain substantive flaws requiring correction, and hereby releases Tremco CPG Inc. from any and all liability related to the design and installation of the product. This detail is subject to change without notice. Contact Tremco to ensure you have the most recent version.*

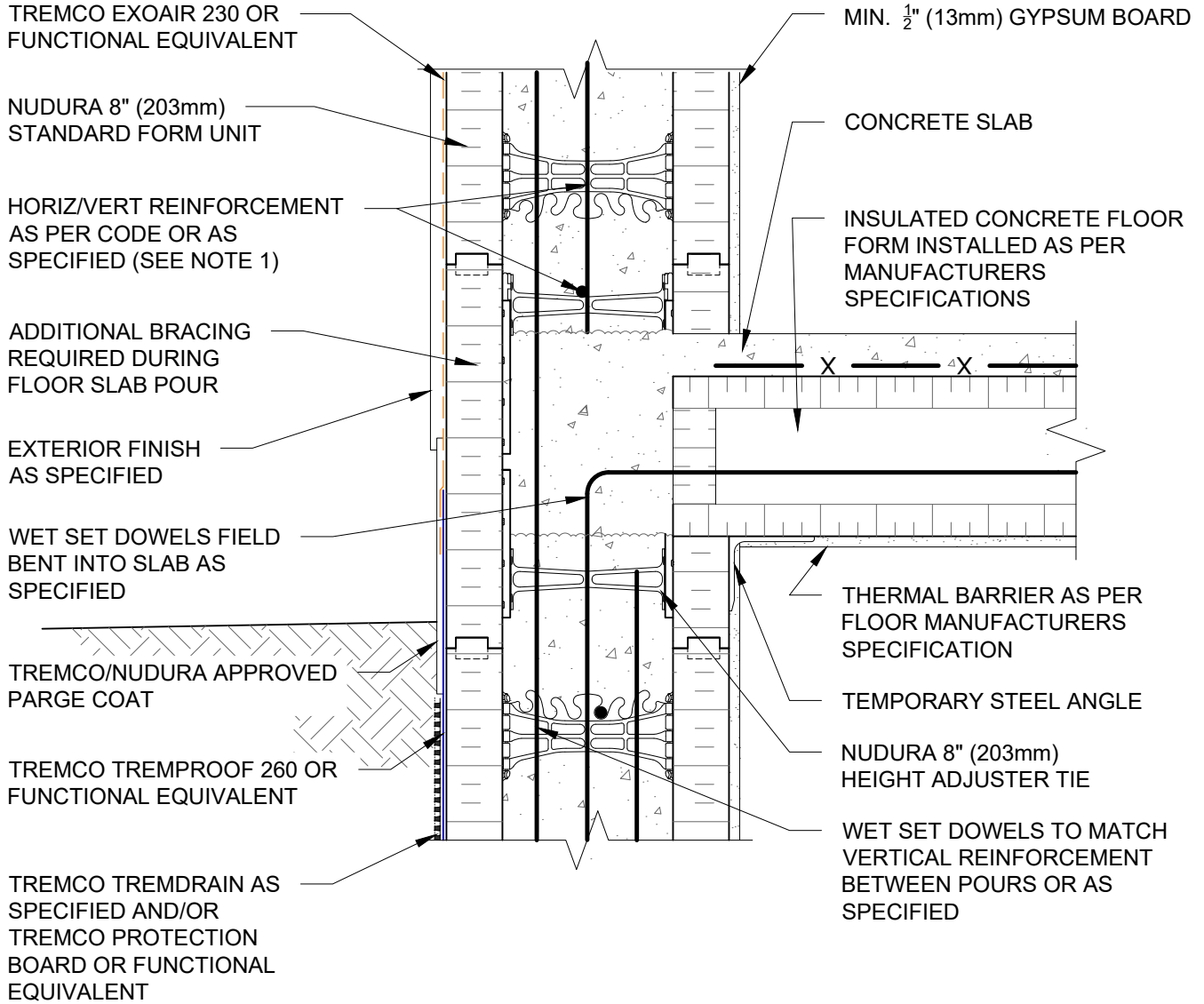
**Non-Combustible Construction - Grade at Floor**



Detail: Nudura 8" (203mm) Form Unit, Composite Steel Deck-Slab, Steel Joists on Side Wall, Brick Veneer Finish		
Drawn by: TVC	Checked by: KS	Scale: 1:8
Revision #: 05	Revised by: KAB	Date: 5/6/2024

File Name:  
D8D07





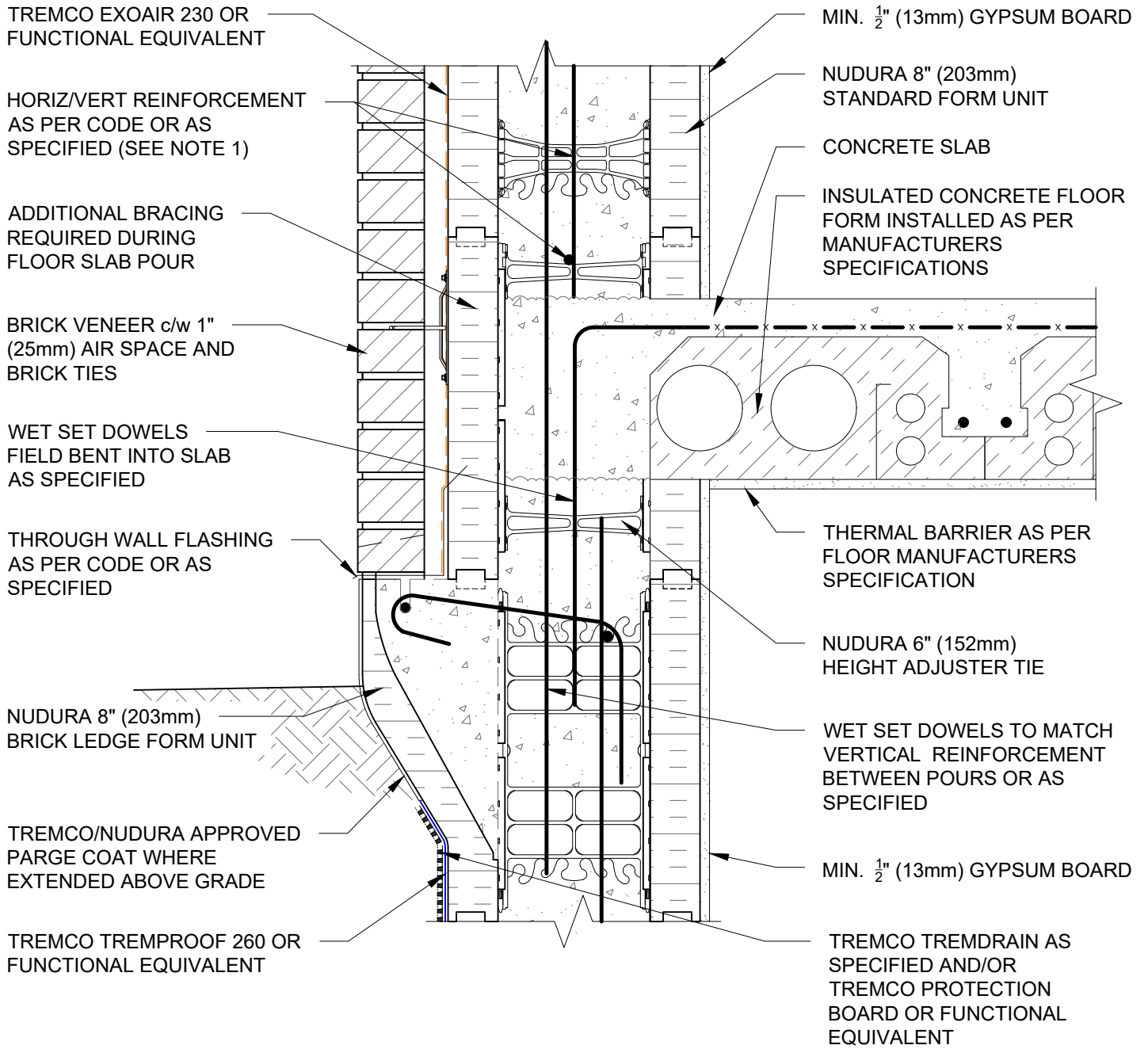
**NOTES:**  
 1) FOR OPTIMAL REINFORCEMENT PLACEMENT IN THE NUDURA FORM, SPACING OF HORIZONTAL REINFORCEMENT TO BE SPECIFIED AT 18" (457mm) O.C. AND VERTICAL REINFORCEMENT TO BE SPECIFIED AT MULTIPLES OF 8" (203mm) O.C. REFER TO NUDURA REINFORCEMENT PLACEMENT DETAILS.

*This detail is for general informational purposes only. The project design professional determines, in its sole discretion, whether this detail or a functionally equivalent detail is best suited for the project with respect to any architecture, engineering, and design requirements, including any local building code requirements. If this document is not reviewed and the product is not approved for use by a licensed design professional, the customer agrees that the detail may contain substantive flaws requiring correction, and hereby releases Tremco CPG Inc. from any and all liability related to the design and installation of the product. This detail is subject to change without notice. Contact Tremco to ensure you have the most recent version.*

**Non-Combustible Construction - Grade at Floor**

Detail: Nudura 8" (203mm) Form Unit, ICFS Connection, ICFS Resting on Form, Exterior Side Wall at Grade, Exterior Finish as Specified			File Name:
Drawn by: TVC	Checked by: KS	Scale: 1:8	D8D08
Revision #: 04	Revised by: KAB	Date: 5/6/2024	





NOTES:  
 1) FOR OPTIMAL REINFORCEMENT PLACEMENT IN THE NUDURA FORM, SPACING OF HORIZONTAL REINFORCEMENT TO BE SPECIFIED AT 18" (457mm) O.C. AND VERTICAL REINFORCEMENT TO BE SPECIFIED AT MULTIPLES OF 8" (203mm) O.C. REFER TO NUDURA REINFORCEMENT PLACEMENT DETAILS.

*This detail is for general informational purposes only. The project design professional determines, in its sole discretion, whether this detail or a functionally equivalent detail is best suited for the project with respect to any architecture, engineering, and design requirements, including any local building code requirements. If this document is not reviewed and the product is not approved for use by a licensed design professional, the customer agrees that the detail may contain substantive flaws requiring correction, and hereby releases Tremco CPG Inc. from any and all liability related to the design and installation of the product. This detail is subject to change without notice. Contact Tremco to ensure you have the most recent version.*

**Non-Combustible Construction - Grade at Floor**



Detail: Nudura 8" (203mm) Form Unit, ICFS Connection, ICFS Resting on Form, Exterior Side Wall at Grade, Brick Veneer Finish		
Drawn by: TVC	Checked by: KS	Scale: 1:8
Revision #: 04	Revised by: KAB	Date: 5/6/2024

File Name:	D8D09	
Tremco CPG Inc.		
www.tremcocpg.com		



TREMCO EXOAIR 230 OR  
FUNCTIONAL EQUIVALENT

HORIZ/VERT REINFORCEMENT  
AS PER CODE OR AS  
SPECIFIED (SEE NOTE 1)

ADDITIONAL BRACING  
REQUIRED DURING  
FLOOR SLAB POUR

BRICK VENEER c/w 1"  
(25mm) AIR SPACE AND  
BRICK TIES

WET SET DOWELS  
FIELD BENT INTO SLAB  
AS SPECIFIED

THROUGH WALL FLASHING  
AS PER CODE OR AS  
SPECIFIED

NUDURA 8" (203mm)  
HEIGHT ADJUSTER TIE

NUDURA 8" (203mm)  
BRICK LEDGE FORM UNIT

TREMCO/NUDURA APPROVED  
PARGE COAT WHERE  
EXTENDED ABOVE GRADE

TREMCO TREMPROOF 260 OR  
FUNCTIONAL EQUIVALENT

MIN. 1/2" (13mm) GYPSUM BOARD

NUDURA 8" (203mm)  
STANDARD FORM UNIT

CONCRETE SLAB

INSULATED CONCRETE FLOOR  
FORM INSTALLED AS PER  
MANUFACTURERS  
SPECIFICATIONS

THERMAL BARRIER AS PER  
FLOOR MANUFACTURERS  
SPECIFICATION

TEMPORARY STEEL ANGLE

WET SET DOWELS TO MATCH  
VERTICAL REINFORCEMENT  
BETWEEN POURS OR AS  
SPECIFIED

MIN. 1/2" (13mm) GYPSUM BOARD

TREMCO TREMDRAIN AS  
SPECIFIED AND/OR  
TREMCO PROTECTION  
BOARD OR FUNCTIONAL  
EQUIVALENT

**NOTES:**

1) FOR OPTIMAL REINFORCEMENT PLACEMENT IN THE NUDURA FORM, SPACING OF HORIZONTAL REINFORCEMENT TO BE SPECIFIED AT 18" (457mm) O.C. AND VERTICAL REINFORCEMENT TO BE SPECIFIED AT MULTIPLES OF 8" (203mm) O.C. REFER TO NUDURA REINFORCEMENT PLACEMENT DETAILS.

*This detail is for general informational purposes only. The project design professional determines, in its sole discretion, whether this detail or a functionally equivalent detail is best suited for the project with respect to any architecture, engineering, and design requirements, including any local building code requirements. If this document is not reviewed and the product is not approved for use by a licensed design professional, the customer agrees that the detail may contain substantive flaws requiring correction, and hereby releases Tremco CPG Inc. from any and all liability related to the design and installation of the product. This detail is subject to change without notice. Contact Tremco to ensure you have the most recent version.*

**Non-Combustible Construction - Grade at Floor**



Nudura Technical Support: 866-468-6299  
International: +1 705-726-9499

Detail: Nudura 8" (203mm) Form Unit, ICFS Connection, ICFS Resting on Form,  
Exterior Side Wall at Grade, Brick Veneer Finish

Drawn by: TVC

Checked by: KS

Scale: 1:8

Revision #: 04

Revised by: KAB

Date: 5/6/2024

File Name:

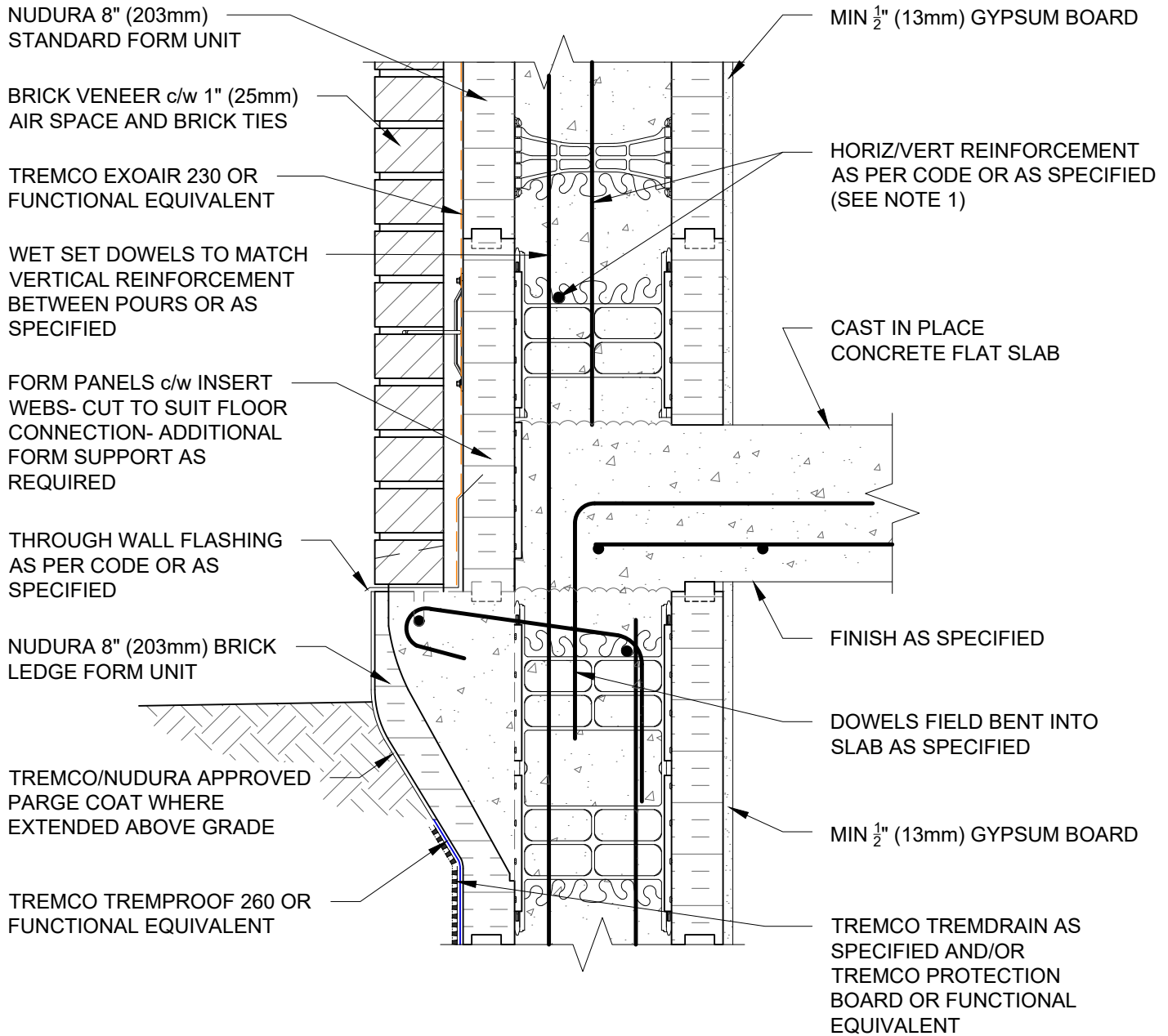
D8D10



Construction Products Group

www.tremcocpg.com





NOTES:  
 1) FOR OPTIMAL REINFORCEMENT PLACEMENT IN THE NUDURA FORM, SPACING OF HORIZONTAL REINFORCEMENT TO BE SPECIFIED AT 18" (457mm) O.C. AND VERTICAL REINFORCEMENT TO BE SPECIFIED AT MULTIPLES OF 8" (203mm) O.C. REFER TO NUDURA REINFORCEMENT PLACEMENT DETAILS.

*This detail is for general informational purposes only. The project design professional determines, in its sole discretion, whether this detail or a functionally equivalent detail is best suited for the project with respect to any architecture, engineering, and design requirements, including any local building code requirements. If this document is not reviewed and the product is not approved for use by a licensed design professional, the customer agrees that the detail may contain substantive flaws requiring correction, and hereby releases Tremco CPG Inc. from any and all liability related to the design and installation of the product. This detail is subject to change without notice. Contact Tremco to ensure you have the most recent version.*

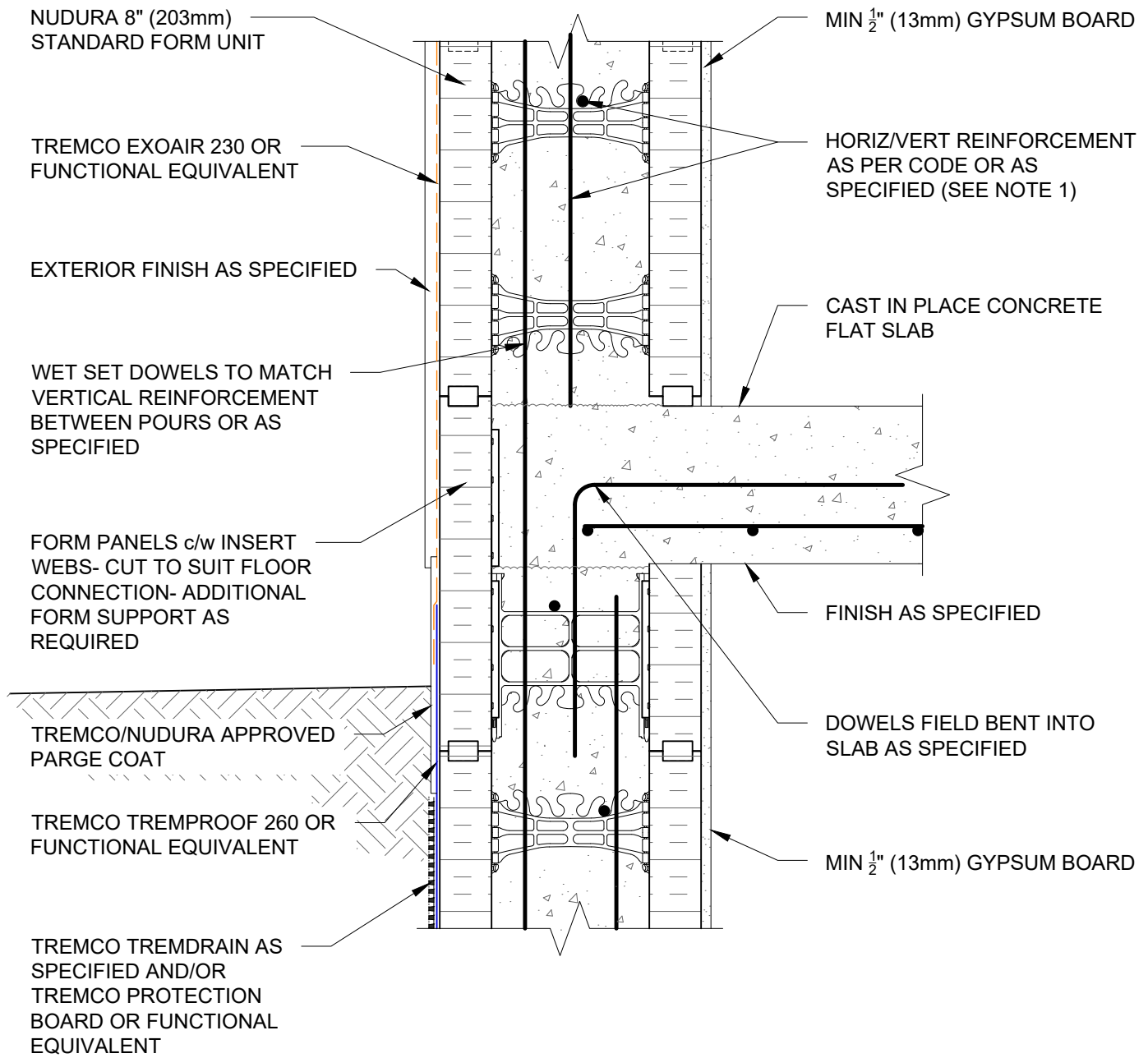
**Non-Combustible Construction - Grade at Floor**



Detail: Nudura 8" (203mm) Brick Ledge Form Unit at Grade, Concrete Flat Plate, Bearing Wall, Brick Veneer Finish		
Drawn by: KS	Checked by: KS	Scale: 1:8
Revision #: 01	Revised by: KAB	Date: 5/6/2024

File Name:	D8E01
------------	-------





NOTES:  
 1) FOR OPTIMAL REINFORCEMENT PLACEMENT IN THE NUDURA FORM, SPACING OF HORIZONTAL REINFORCEMENT TO BE SPECIFIED AT 18" (457mm) O.C. AND VERTICAL REINFORCEMENT TO BE SPECIFIED AT MULTIPLES OF 8" (203mm) O.C. REFER TO NUDURA REINFORCEMENT PLACEMENT DETAILS.

*This detail is for general informational purposes only. The project design professional determines, in its sole discretion, whether this detail or a functionally equivalent detail is best suited for the project with respect to any architecture, engineering, and design requirements, including any local building code requirements. If this document is not reviewed and the product is not approved for use by a licensed design professional, the customer agrees that the detail may contain substantive flaws requiring correction, and hereby releases Tremco CPG Inc. from any and all liability related to the design and installation of the product. This detail is subject to change without notice. Contact Tremco to ensure you have the most recent version.*

**Non-Combustible Construction - Grade at Floor**



Detail: Nudura 8" (203mm) Form Unit, Concrete Flat Plate, Exterior Bearing Wall, Exterior Finish as Specified

Drawn by: KS	Checked by: KS	Scale: 1:8
Revision #: 01	Revised by: KAB	Date: 5/6/2024

File Name:

D8E02

